

GOJAK®

THE FASTER CASTER SYSTEM®

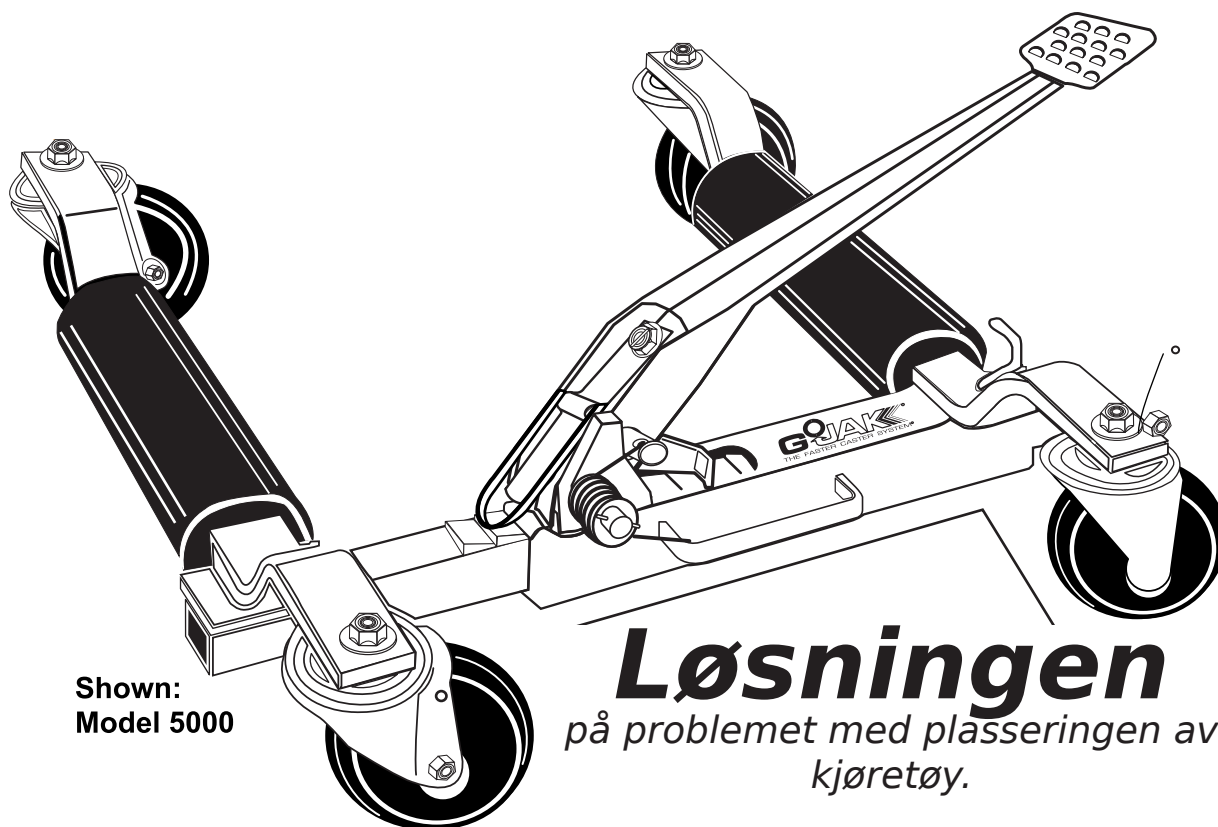
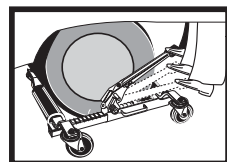
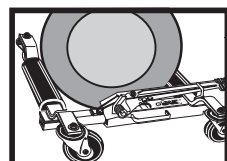
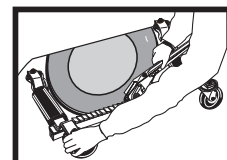
Bruks- og delemannual

modell

4500

5000

6200



Shown:
Model 5000

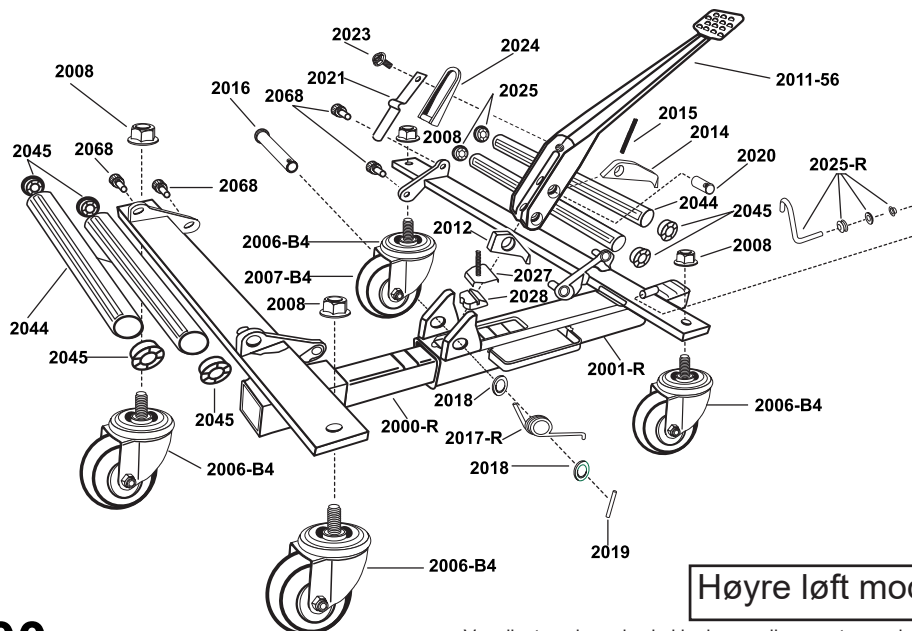
Løsningen
på problemet med plasseringen av
kjøretøy.



NORWEGIAN
EXPORT
IMPORT

Norsk importør:
Norwegian Export Import AS
Hæreberget 2
3330 Skotselv
Telefon 32 75 60 04
Org.nr: NO 968 380 788 MVA

GOJAK MODEL 4500

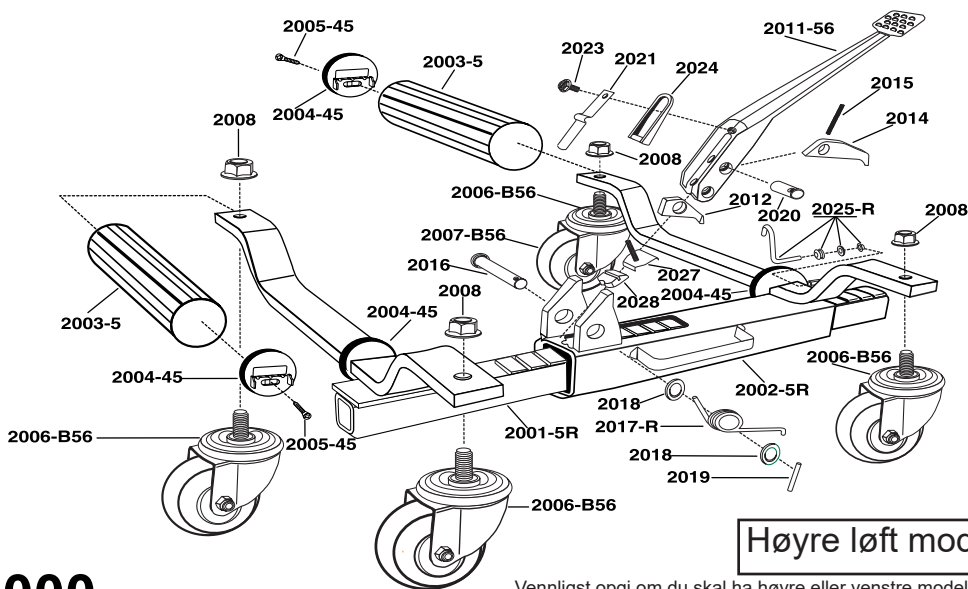


Høyre løft modell vist

Vennligst oppgi om du skal ha høyre eller venstre modell når du bestiller deler

PART #	DESCRIPTION	PART #	DESCRIPTION	PART #	DESCRIPTION
2000-R	Inner Body & Axle Assy. R/H	2016	Lower Pivot Shaft	2027	End Stop Clip & Spring
2000-L	Inner Body & Axle Assy. L/H	2017-R	Torsion Spring-R/H	2028	End Stop
2001-R	Outer Body & Axle Assy. R/H	2017-L	Torsion Spring-L/H	2044	Roller (Steel)
2001-L	Outer Body & Axle Assy. L/H	2018	Washer	2045	Raceway
2006-B4	Caster Assy. 3"	2019	Roller Pin	2068	1/2 13 7/8" Skt. Cap Screw
2007-B4	Wheel & Bearing 3"	2020	Upper Pivot Shaft	3011-56	GoJak Logo Label
2008	Lock Nut	2021	Upper Flat Spring	3020	Model 4500 S.S Label
2011-56	Pedal	2023	Self-Tapping Bolt	3010	Warning Label
2012	Locking Pawl	2024	Directional Lever	3003	Serial Label
2014	Working Pawl	2025-R	Pedal Lock Assy.-R/H		
2015	Working Pawl Spring	2025-L	Pedal Lock Assy.-L/H		

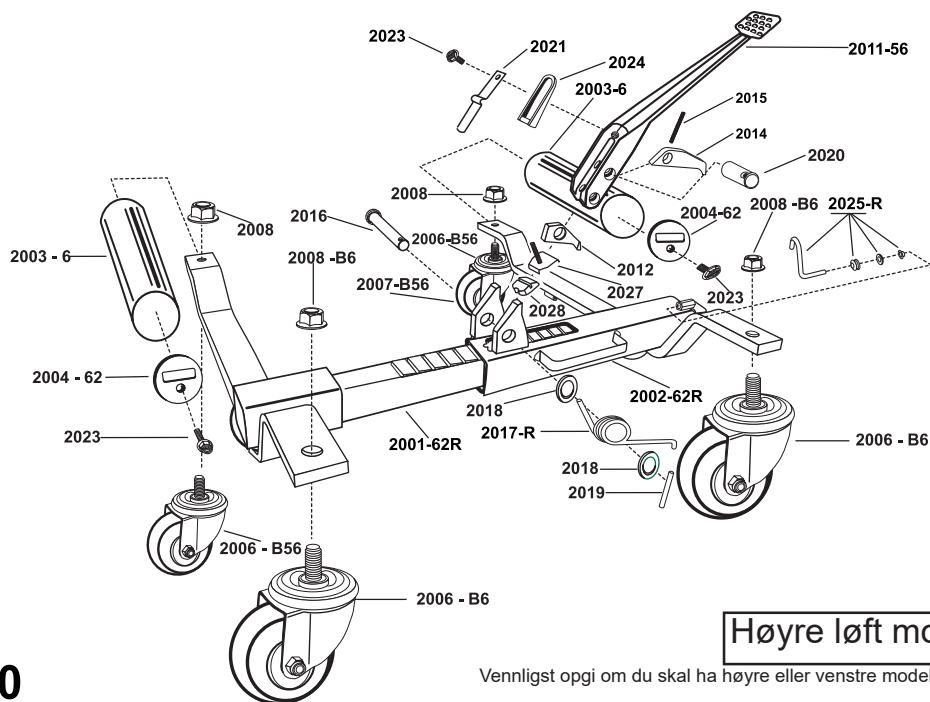
GOJAK MODEL 5000



Høyre løft modell vist

Vennligst oppgi om du skal ha høyre eller venstre modell når du bestiller deler

PART #	DESCRIPTION	PART #	DESCRIPTION	PART #	DESCRIPTION
2001-5R	Inner Body & Axle Assy. R/H	2011-56	Pedal	2021	Flat Spring
2001-5L	Inner Body & Axle Assy. L/H	2012	Locking Pawl	2023	Self-Tapping Bolt
2002-5R	Outer Body & Axle Assy. R/H	2014	Working Pawl	2024	Directional Lever
2002-5L	Outer Body & Axle Assy. L/H	2015	Working Pawl Spring	2025-R	Pedal Lock Assy. R/H
2003-5	Roller (High Impact PVC)	2016	Lower Pivot Shaft	2025-L	Pedal Lock Assy. L/H
2004-45	Roller Raceway (Nylon)	2017-R	Torsion Spring R/H	2027	End Stop Clip & Spring
2005-45	Raceway Lock Bolt	2017-L	Torsion Spring L/H	2028	End Stop
2006-B56	4" Black Caster Assy.	2018	Washer	3011-56	GoJak Logo Label
2007-B56	Wheel & Bearing Black 4"	2019	Roll Pin	3016-5	GoJak Model Label
2008	Lock Nut Caster 4"	2020	Upper Pivot Shaft	3010	Warning Label
				3003	Serial No. Label



GOJAK® MODEL 6200

Høyre løft modell vist

Vennligst oppgi om du skal ha høyre eller venstre modell når du bestiller deler

PART#	DESCRIPTION	PART#	DESCRIPTION	PART#	DESCRIPTION
2001-62R	Inner Body & Axle Assy. R/H	2008-B6	Lock Nut Caster 5"	2021	Flat Spring
2001-62L	Inner Body & Axle Assy. L/H	2011-56	Pedal	2023	Self-Tapping Bolt
2002-62R	Outer Body & Axle Assy. R/H	2012	Locking Pawl	2024	Directional Lever
2002-62L	Outer Body & Axle Assy. L/H	2014	Working Pawl	2025-R	Pedal Lock Assy. R/H
2003-6	Roller (Steel)	2015	Working Pawl Spring	2025-L	Pedal Lock Assy. L/H
2004-62	Roller Raceway	2016	Lower Pivot Shaft	2027	End Stop Clip & Spring
2006-B56	Caster Assy. 4"	2017-R	Torsion Spring R/H	2028	End Stop
2006-B6	Caster Assy. 5"	2017-L	Torsion Spring L/H	3011-56	GoJak Logo Label
2007-B56	Wheel & Bearing 4"	2018	Washer	3016-6	GoJak Model Label
2007-B6	Wheel & Bearing 5"	2019	Roll Pin	3010	Warning Label
2008	Lock Nut Caster 4"	2020	Upper Pivot Shaft	3003	Serial No. Label

Gratulerer: Du har akkurat kjøpt en av de nyttigste redskaper for flytting av kjøretøy som finnes. GoJak® er rask og enkel å bruke, samtidig som den er trygg (forutsetter at den er brukt iht denne veiledningen). Les derfor alle instruksjonene grundig før du tar den i bruk. Sørg også for at alle som skal bruke GoJak® er kjent med hvordan den brukes før arbeider settes i gang.



VIKTIG!
Les og forstå advarslene først!

Advarsel! IKKE bruk GoJak® på hellende flater. GoJaker må kun brukes på vannrette flater. Uventet bevegelse kan oppstå straks GoJak® løfter bilens dekk opp fra bakken.

Advarsel! IKKE start kjøretøyets motor, eller forsøke å kjøre det med goJaker i bruk. GoJak er konstruert for å bli brukt med håndkraft.

Advarsel! IKKE forsøk å skyve GoJaker over hindringer; den er konstruert for å bli brukt på vannrette og tildels jevne overflater.

Advarsel! IKKE bruk GoJak til å løfte hjul med bredder som overstiger nedstående tabell og det som enheten er merket med. Maks hjulbredder er:

Modell 4500: 20"

Modell 5000: 9"

Modell 6200: 13"

Advarsel! IKKE glem å smøre deler som skal smøres. Dette er oppgitt lenger ned på siden. Uten korrekt smøring kan det oppstå slitasjeskader som igjen kan medføre at GoJak® ikke fungerer som den skal.

Advarsel! IKKE belast GoJak® med mer enn den er konstruert for pr enhet:

Modell 4500: 510kg

Modell 5000: 567kg

Modell 6200: 700kg

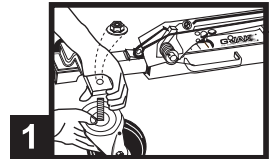
Merk deg advarslene, og forhold deg til dem til enhver tid. Mangel på smøremidler, overbelastning og misbruk kan være farlig og skader som følge av feil bruk kan annullere garantien.

Smøreinstruksjoner: kontroller smøring ukentlig

1. Liberally coat toothed shaft with standard bearing grease (both sides and bottom only - do not lubricate teeth).
2. Lubricate pivot pins and mechanism with SAE 30 weight motor oil, or light machine oil.
3. Turn GoJak® over and lubricate ball bearing raceways on casters with SAE 30 weight motor oil or light machine oil. (Axle bearings are permanently lubricated at the factory, and do not require lubrication).
4. **DO NOT lubricate raceways on Models 4500 and 5000!** These models use a self-lubricating raceway, and reduced raceway life may occur when continually subjected to certain petroleum products. Lubricate roller raceways at each end with bearing grease only on **Model 6200**.

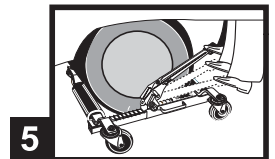
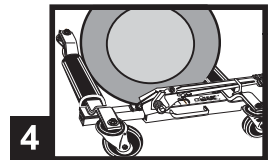
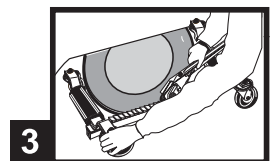
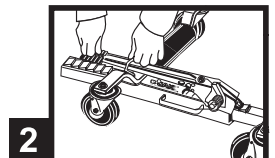
CASTER ASSEMBLY INSTRUCTIONS

1. REMOVE CASTERS FROM PLASTIC BAG AND INSERT STEM OF CASTER THROUGH AXLE HOLE. INSTALL LOCK NUTS. TIGHTEN NUTS TO APPROXIMATELY 80 FT. LBS. OF TORQUE.



GOJAK® OPERATING INSTRUCTIONS

- 2 After casters are installed, you are now ready to operate GoJak®. Place GoJak® on floor and press down on pedal to release pedal lock. Place directional lever (U-shaped lever found on top of pedal) in it's lowered position. Depress pedal once again to release locking pawl and GoJak® will now open.
- 3 Expand GoJak® far enough to place around and position so both rollers now contact the tire tread. To obtain the best control of GoJak® while expanding around tire, place your left hand on top of the left side axle and your right hand at the center of the pedal, as shown in the diagram at the right.
- 4 Install GoJak® so that the unit is parallel to the sidewall of the tire to be lifted. Leave approximately 3/4" of clearance between tire and GoJak®. This is very important: if unit is misaligned, it is possible that the tire will be forced to hit the axle of the GoJak® and not the rollers, this may damage the GoJak® and void the warranty.
- 5 To lift the tire, flip directional lever up and place foot on pedal depressing with smooth, even strokes. Cycle pedal until tire is lifted from the surface one inch or less. After lifting, the lower the tire is to the ground the more stable GoJak® will be. Repeat process on the other tires and maneuver the vehicle as required. To release GoJak®, place directional lever in the down position and cycle the pedal until the rollers disengage from the tire. GoJak® may now be removed.



Norsk importør:
Norwegian Export Import AS
Idunsvei 1
3340 Åmotd
Telefon 911 93 896
Org.nr: NO 968 380 788 MVA